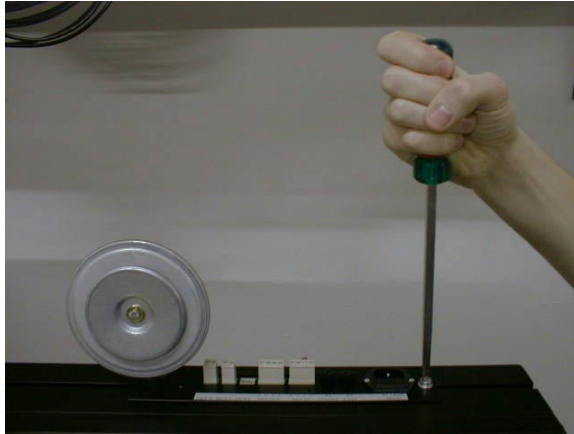
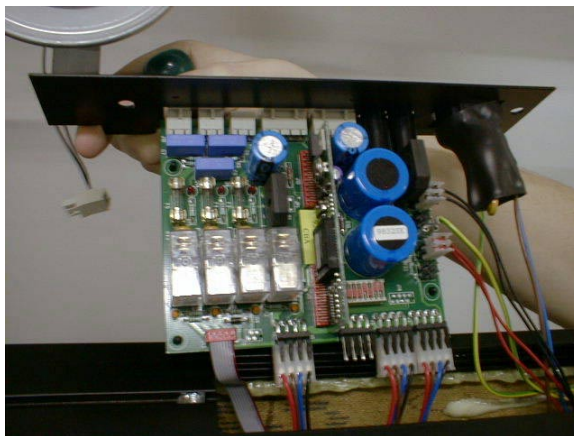


1. How to change the ControlBoard (CB)

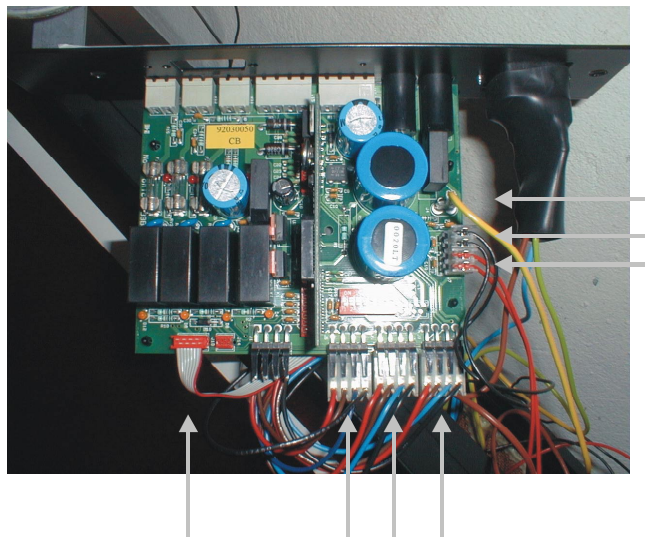
- 1) Disconnect 230VAC / 110VAC power cable.
- 2) Loosen the 2 screws.
- 3) Unplug the 5 grey connectors.



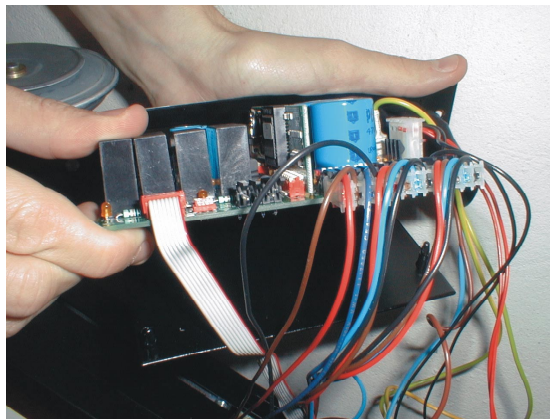
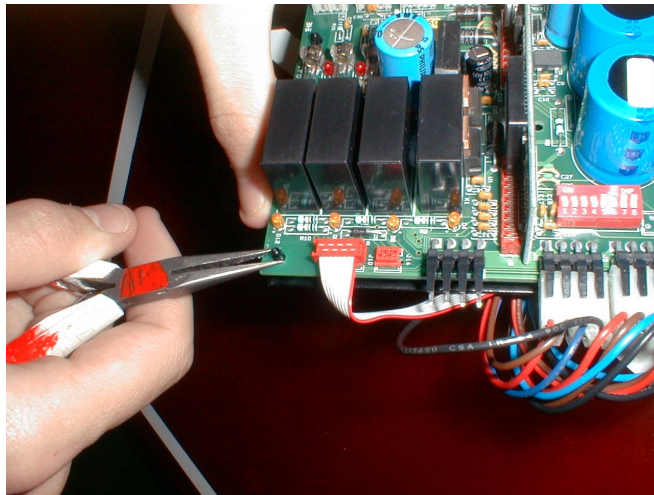
- 3) Pull out the print.



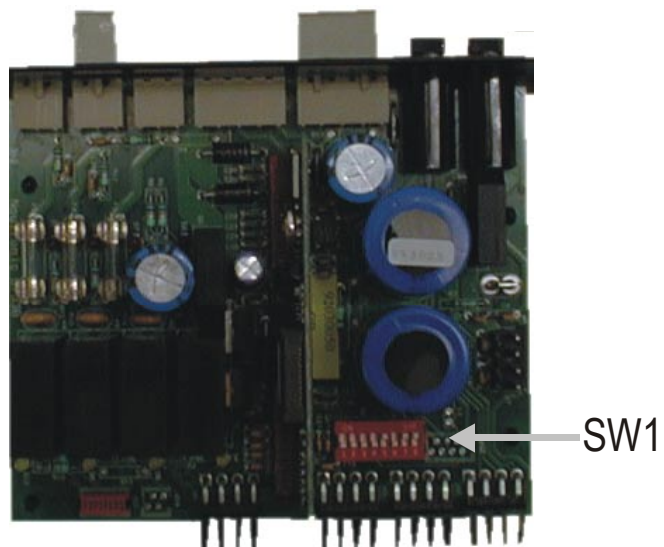
- 4) Carefully unplug the wires that are indicate at picture below.



- 5) Then squeeze the 4 black plastic holders with a appropriate tool.



- 6) Set the dipswitch (sw1) on the new print as it was on the broken print.



- 7) Before you connect cable between the scoreboard and the console, be sure that there is no short-circuit on the cable between the pins.